

# openCRX SDK Installation (Software Development Kit)

Version 2.5.1



[www.opencrx.org](http://www.opencrx.org)

---

## **License**

The contents of this file are subject to a BSD license (the "License"); you may not use this file except in compliance with the License. You may obtain a copy of the License at <http://www.opencrx.org/license.htm>

**Copyright** 2009 © CRIXP Corp. All rights reserved.



## Table of Contents

<b>1</b>	<b>About this Book.....</b>	<b>3</b>
1.1	Who this book is for.....	3
1.2	What do you need to understand this book.....	3
1.3	Tips, Warnings, etc.....	3
<b>2</b>	<b>Prerequisites.....</b>	<b>4</b>
2.1	JDK 5.0.....	4
2.2	Ant 1.7.0.....	4
2.3	openCRX SDK Installer.....	4
<b>3</b>	<b>Installing openCRX SDK on Windows.....</b>	<b>5</b>
<b>4</b>	<b>Installing openCRX SDK on Linux.....</b>	<b>9</b>
<b>5</b>	<b>Configuration Files, Scripts, etc.....</b>	<b>13</b>
5.1	openCRX Distribution.....	13
5.2	DB Scripts.....	13
5.3	Code Tables – UI Customizing.....	13
5.4	UML Models and Java Source of openCRX/core.....	13
5.5	openCRX servlets.....	13
<b>6</b>	<b>Next Steps.....</b>	<b>14</b>

## List of Figures

## List of Listings

# 1 About this Book

This book describes how to **install the openCRX SDK** (Software Development Kit) with the BitRock installer on **Windows** or **Linux** platforms. Please note that this is a guide to set up a **development environment**.

openCRX is the leading enterprise-class open source CRM suite. openCRX is based on openMDX, an open source MDA framework based on the OMG's model driven architecture (MDA) standards. This guarantees total openness, standards compliance, a state-of-the-art component-based architecture, and virtually unlimited scalability.

## 1.1 Who this book is for

The intended audience are openCRX developers and administrators.

## 1.2 What do you need to understand this book

This book describes how to install openCRX with the BitRock installer, which takes care of all the tricky configuration issues for you. The prerequisites are minimal (JDK and Ant) and once they are met you should have the openCRX SDK installed in less than 5 minutes.

## 1.3 Tips, Warnings, etc.

We make use the following pictograms:



Information provided as a "Tip" might be helpful for various reasons: time savings, risk reduction, etc. - it goes without saying that we advise to follow our guides meticulously

**meticulous** \muh-TIK-yuh-luhs\, *adjective*:  
Extremely or excessively careful about details.



You should carefully read information marked with "Important". Ignoring such information is typically not a good idea.



Warnings should not be ignored (risk of data loss, etc.)

## 2 Prerequisites

### 2.1 JDK 5.0

Install the Sun Java JDK 5.0 available from the following site:

Sun JDK 5.0:

[http://java.sun.com/javase/downloads/index\\_jdk5.jsp](http://java.sun.com/javase/downloads/index_jdk5.jsp)



It is not sufficient to have a Java Runtime Environment (JRE) only. The full-blown JDK is required to run openCRX.



Don't forget to set the **environment variable** `JAVA_HOME`. It should point to your JDK installation directory, e.g. to `D:\Java\jdk1.5.0`.

### 2.2 Ant 1.7.0

Download Ant 1.7.0 (available from <http://ant.apache.org/>) for your platform and install it by expanding the downloaded file to a directory of your choice.



Ant v1.7.1 might work as well. However, we recommend Ant v1.7.0 (there are some combinations of JDK versions and Ant v1.7.1 that "don't like each other"...)



Don't forget to set the **environment variables** `ANT_HOME` and `ANT_OPTS` as follows:

- **ANT\_HOME** should point to the installation directory of Ant, e.g. `D:\apache-ant-1.7.0` on Windows or `/opt/apache-ant-1.7.0` on Linux.
- **ANT\_OPTS** should be set to `-Xmx512m` so that enough memory can be allocated to compile openCRX during the installation of the openCRX SDK.

### 2.3 openCRX SDK Installer

Download the openCRX SDK Installer appropriate for your platform from Sourceforge: <http://www.opencrx.org/downloads.htm>

Installer for Windows:

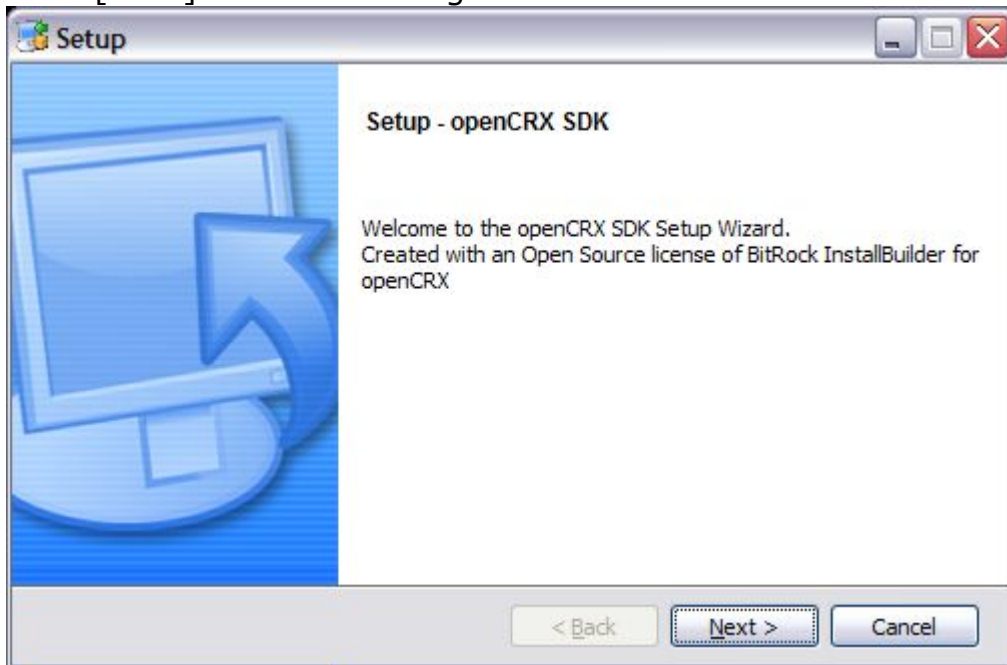
`opencrxSdk-2.5.1-windows-installer.exe`

Installer for Linux:

`opencrxSdk-2.5.1-linux-installer.bin`

### 3 Installing openCRX SDK on Windows

1. Launch the Installer `opencrxSdk-2.5.1-windows-installer.exe`
2. Click [Next] on the following screen:



3. Accept the BSD License Agreement and click [Next]:

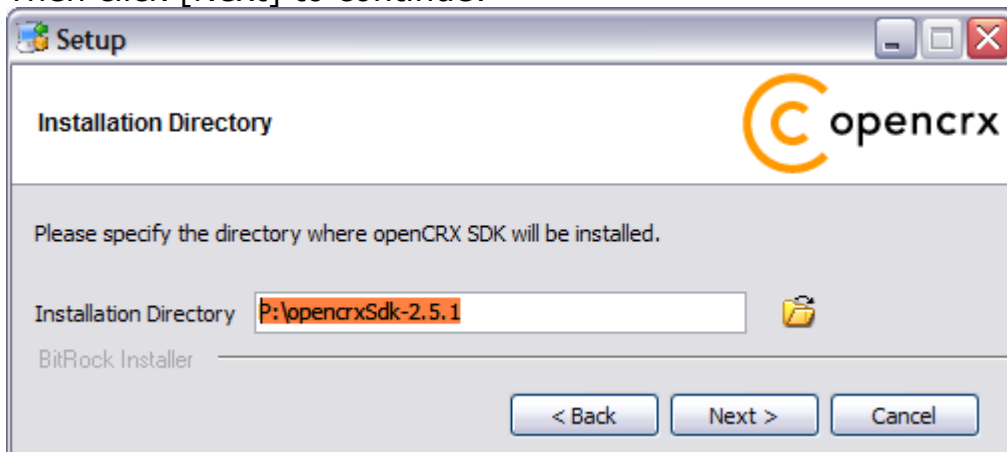


4. Choose an installation directory (it will be created automatically if it does not exist yet).

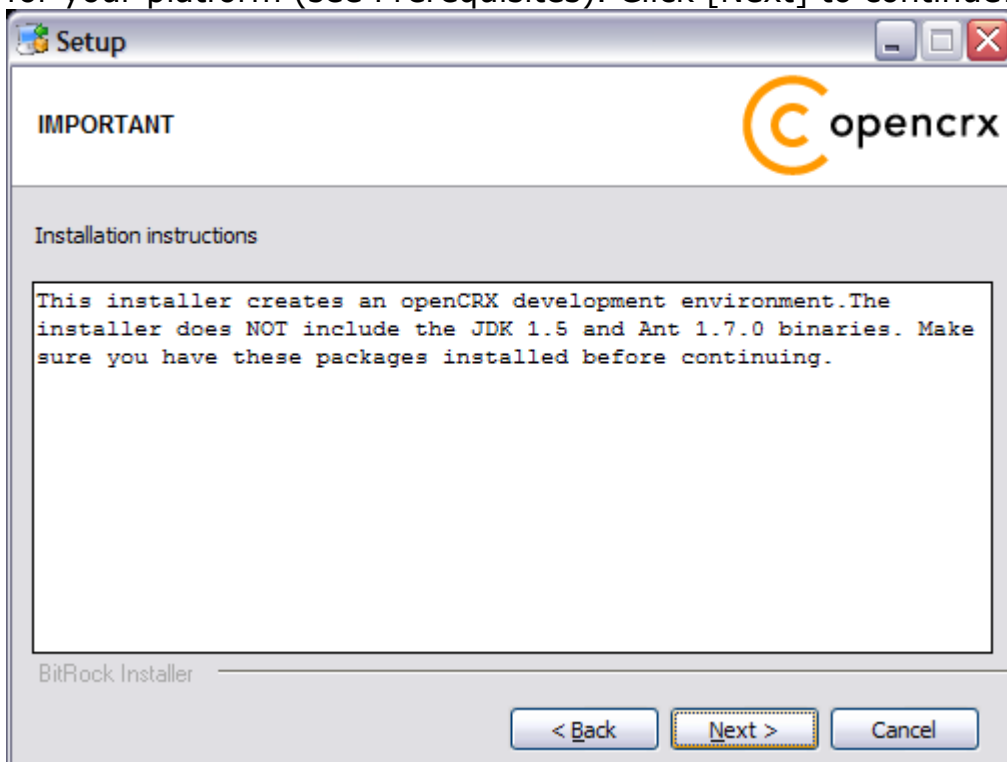


It is a good idea to **avoid paths containing blanks** like the default installation directory ...\\Program Files\\... on Windows.

Then click [Next] to continue:



5. Please note the information on the following screen. It is assumed that you have installed JDK 1.5 (also called JDK 5.0) and Ant 1.7.0 appropriate for your platform (see Prerequisites). Click [Next] to continue:



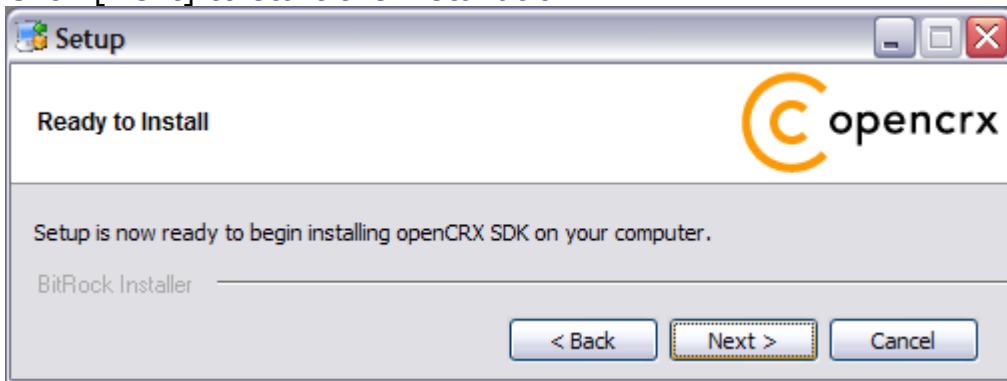
6. Select the home directory of your JDK 1.5 installation - for example **D:\Java\jdk1.5.0** - and then click [Next] to continue:



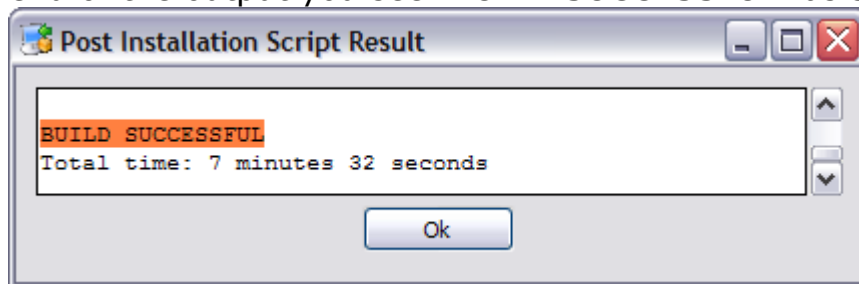
7. Select the home directory of your Ant installation - for example **D:\apache-ant-1.7.0** - and then click [Next] to continue:



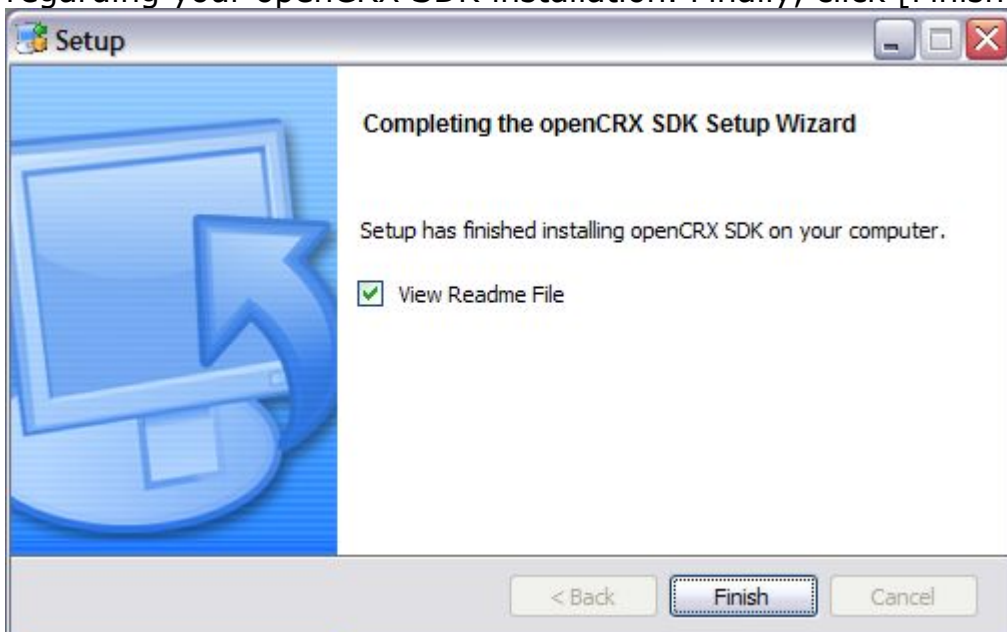
8. Click [Next] to start the installation:



Please note that once the installation is complete, the installer will automatically launch a post installation script. This script builds an openCRX distribution from scratch (and depending on your CPU this will take a few minutes, so please be patient). Once the post installation script has completed, verify that at the end of the output you see "BUILD SUCCESSFUL" as shown below:



9. Don't forget to read the Readme file as it contains important information regarding your openCRX SDK installation. Finally, click [Finish]:





## 4 Installing openCRX SDK on Linux

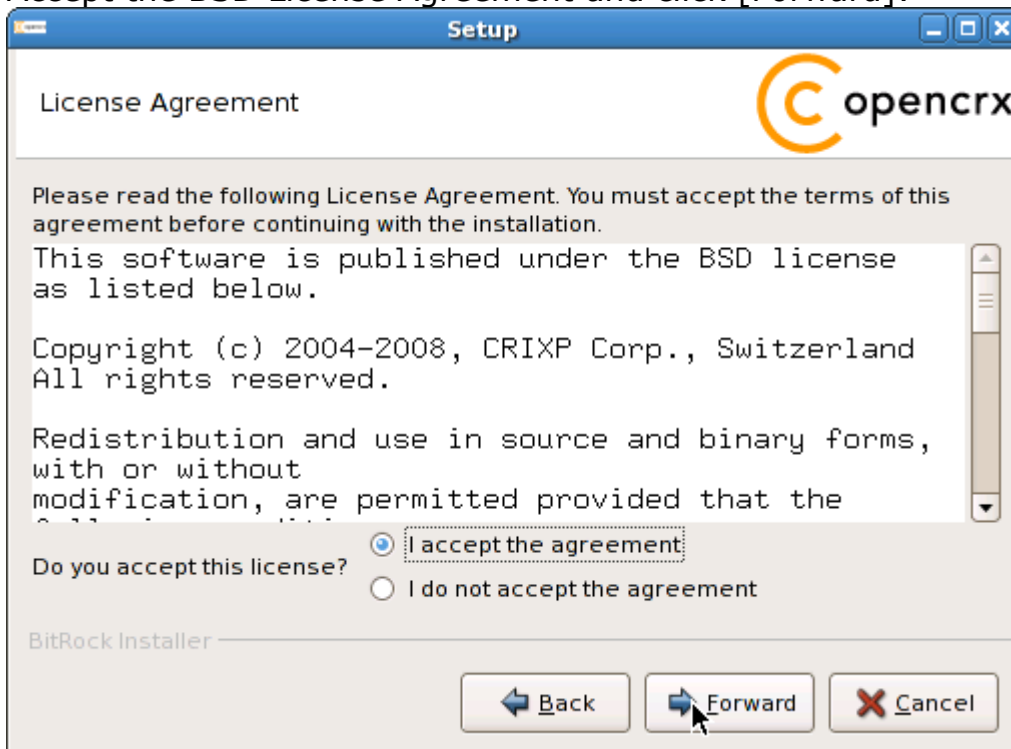


You can launch the installer in text/console mode with the parameter `--mode text` in case your system is GUI-less.

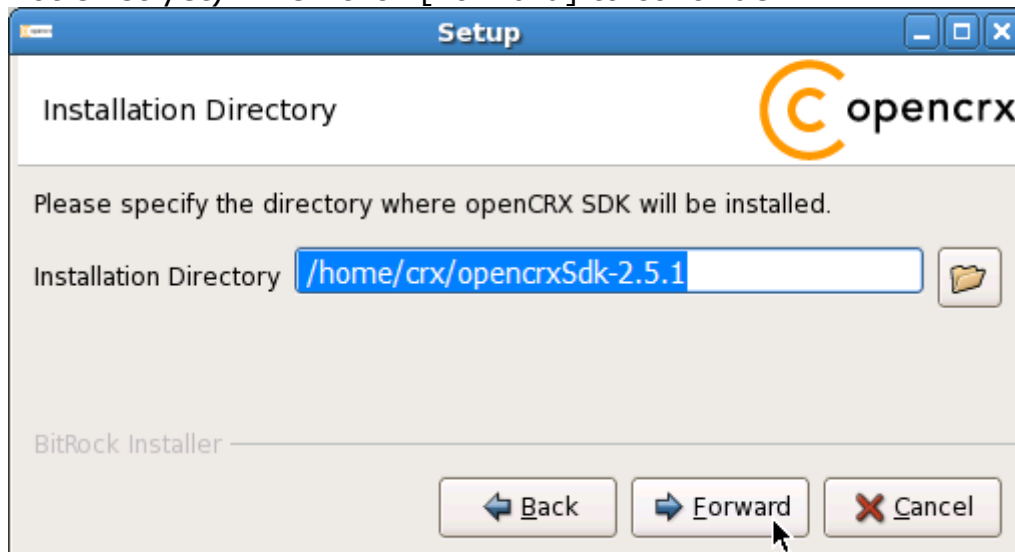
1. Launch the Installer `opencrxSdk-2.5.1-linux-installer.bin`
2. Click [Forward] on the following screen:



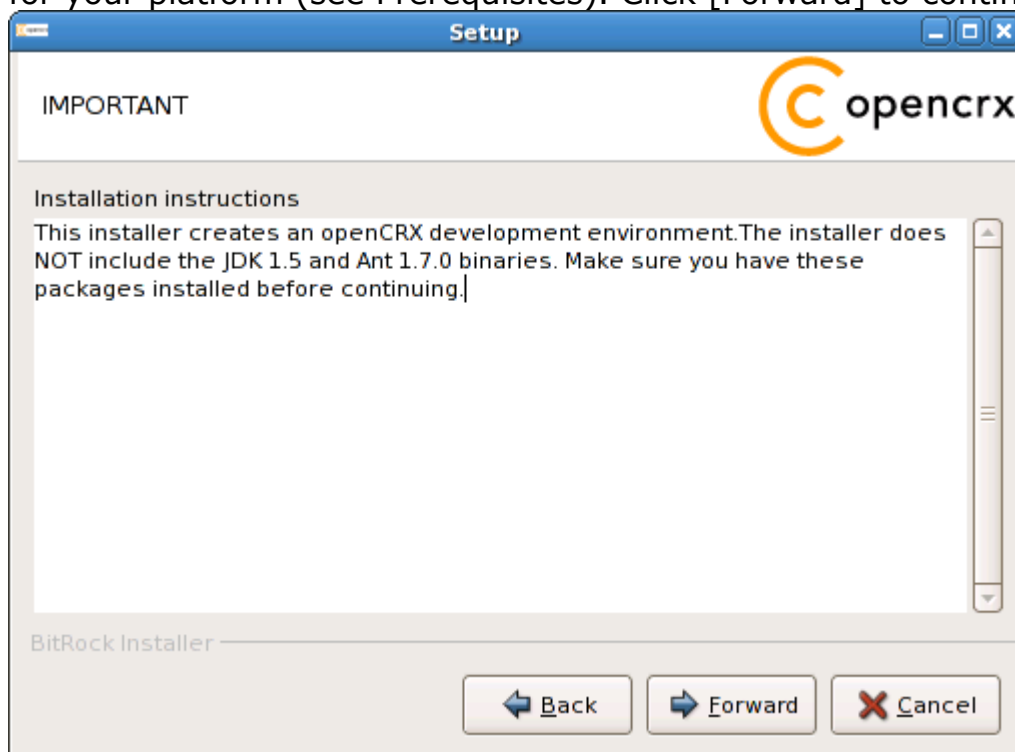
3. Accept the BSD License Agreement and click [Forward]:



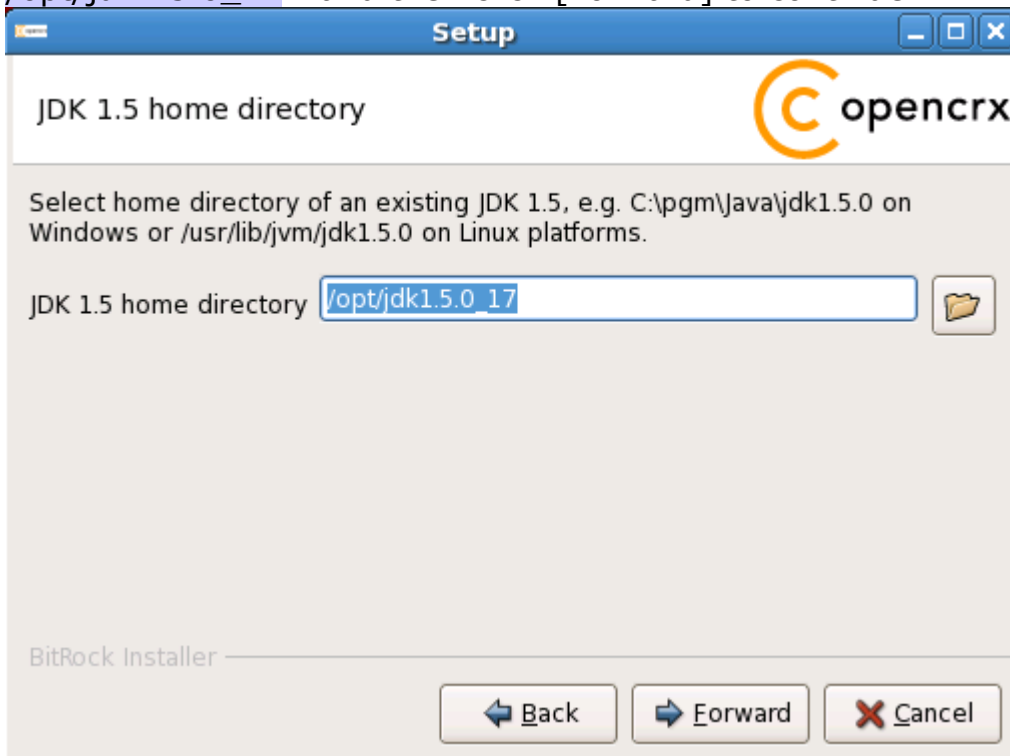
4. Choose an installation directory (it will be created automatically if it does not exist yet). Then click [Forward] to continue:



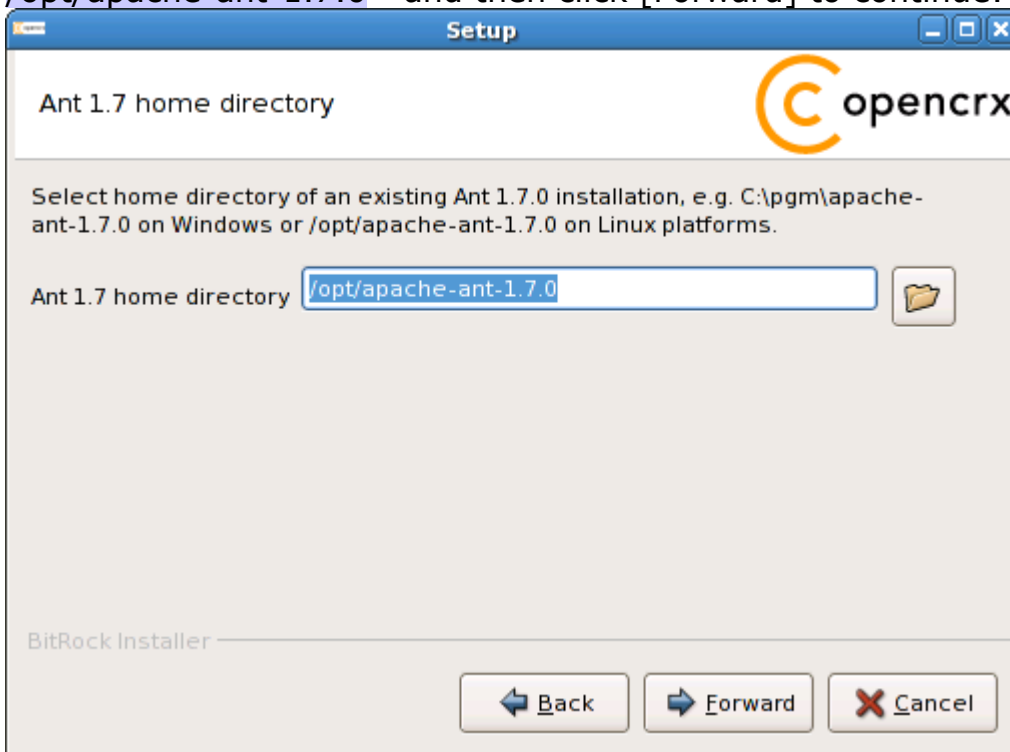
5. Please note the information on the following screen. It is assumed that you have installed JDK 1.5 (also called JDK 5.0) and Ant 1.7.0 appropriate for your platform (see Prerequisites). Click [Forward] to continue:



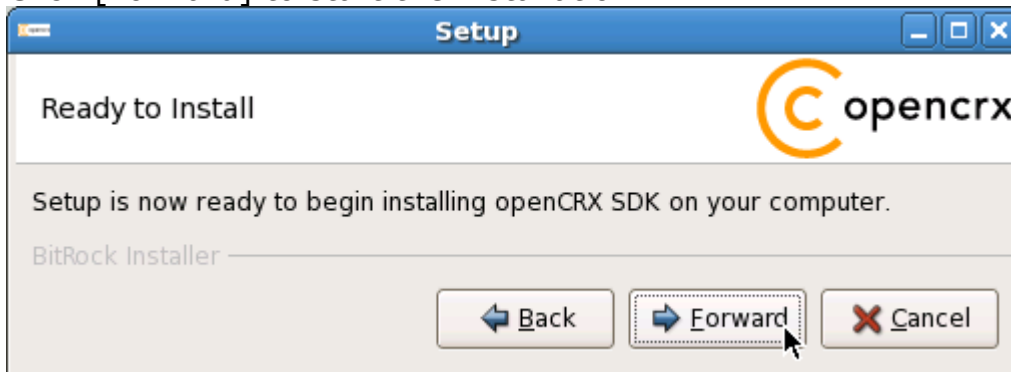
6. Select the home directory of your JDK 1.5 installation - for example `/opt/jdk1.5.0_17` - and then click [Forward] to continue:



7. Select the home directory of your Ant installation - for example `/opt/apache-ant-1.7.0` - and then click [Forward] to continue:



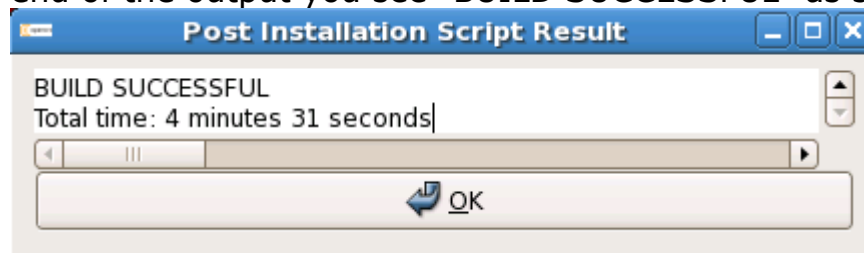
8. Click [Forward] to start the installation:



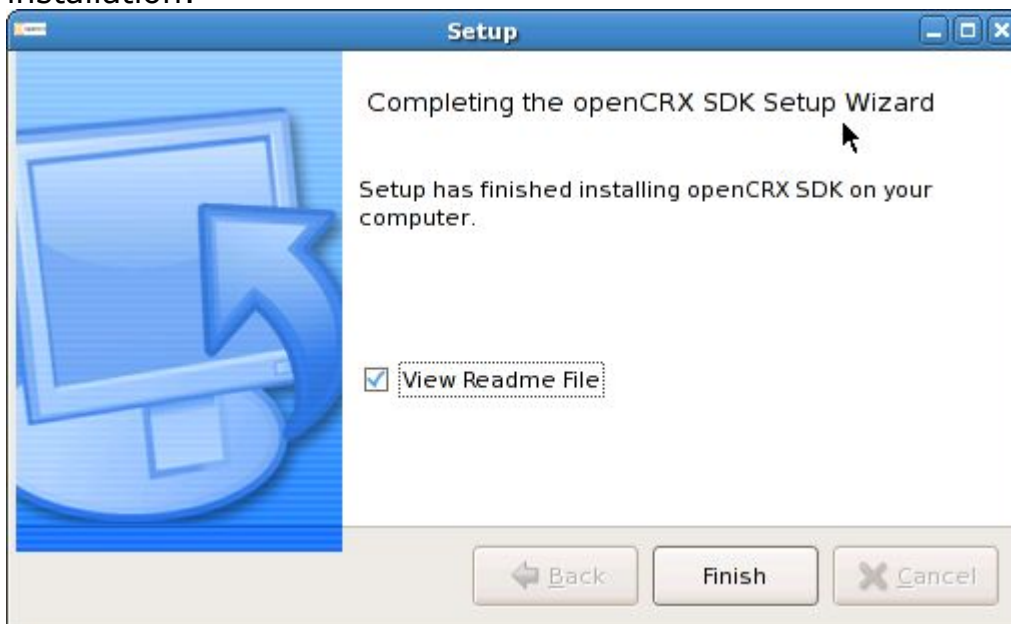
TIP

Please note that once the installation is complete, the installer will automatically launch a post installation script. This script builds an openCRX distribution from scratch (and depending on your CPU this can easily take a few minutes, so please be patient).

Once the post installation script has completed, verify that at the end of the output you see "BUILD SUCCESSFUL" as shown below:



9. Don't forget to read the Readme file as it contains important information regarding your openCRX SDK installation. Click [Finish] to complete the installation:



## 5 Configuration Files, Scripts, etc.

The SDK Installer copied/unpacked all the files required to build openCRX from the sources to the installation directory, and it also built a distribution of openCRX. In addition to the plain source files, however, you will also find lots of configuration files, scripts, etc. The following list of interesting locations will get you started even though there is a lot more to discover.

### 5.1 openCRX Distribution

You will find the openCRX core distribution in the directory

**<SDK\_Install\_Dir>\opencrx-2.5.1\jre-1.5\core\deployment-unit.**

The openCRX apps distribution is located in the directory

**<SDK\_Install\_Dir>\opencrx-2.5.1\jre-1.5\apps\deployment-unit.**

### 5.2 DB Scripts

The directory **<SDK\_Install\_Dir>\opencrx-2.5.1\core\src\sql** contains all the scripts required to setup an openCRX database on any of the supported database management systems (HSQLDB, MySQL, PostgreSQL, DB2, Oracle, MSSQL). Please refer to the appropriate DB installation guide for additional information.

### 5.3 Code Tables – UI Customizing

Code tables of the default distribution are contained in the directory

**<SDK\_Install\_Dir>\opencrx-2.5.1\core\src\data\org.opencrx\code**

UI customizing files of the default distribution are contained in the directory

**<SDK\_Install\_Dir>\opencrx-2.5.1\core\src\data\org.opencrx\ui**

Please refer to the openCRX customizing guide for additional information.

### 5.4 UML Models and Java Source of openCRX/core

The directory **<SDK\_Install\_Dir>\opencrx-2.5.1\core\src\model**

contains all UML models, the Java sources are contained in the directory

**<SDK\_Install\_Dir>\opencrx-2.5.1\core\src\java**

### 5.5 openCRX servlets

The directory **<SDK\_Install\_Dir>\opencrx-2.5.1\core\src\data** contains the servlets caldav (not for production!), ical, imap, news, rest, and vcard.

## 6 Next Steps

Now that you have successfully installed openCRX you might want to have a look at some of the additional documentation published at <http://www.opencrx.org/documents.htm>.